

HEADQUARTERS

Lamina Technologies SA Switzerland
Rue Pythagore, 2
1400 Yverdon-les-Bains
Switzerland
+41 (0)24 423 55 55
info@lamina-tech.ch
www.lamina-tech.ch

FOLLOW US

 /LaminaTechnologies

 /LaminaTechnologiesHQ

 /LaminaTech

 /LaminaTechnologies

SUBSIDIARIES

Lamina Technologies Deutschland GmbH
Athenslebener Weg 33
39418 Staßfurt
Germany
+49 (3925) 329 277
info@lamina-tech.de
www.lamina-tech.ch

Lamina Technologies (France) SA
15 Rue Bernard Palissy, Entrepot Jeantet STJ
25300 Granges Narboz
France
+33 (0)3 81 49 67 30
info@lamina-tech.fr
www.lamina-tech.ch

Lamina Technologii LLC Russia
Office 6023 - Kantemirovskaya str. 58
115477, Moscow
Russia
+7 499 653 93 56
info@lamina-russia.ru
www.lamina-tech.ch

Lamina Trading (Shanghai) Co.,Ltd
Room 340, Building No.1
No. 526 Fute 3rd Road East
Pilot Free Trade Zone
200131 Shanghai
China
+86 21 6479 0515
info-cn@lamina-tech.ch
www.lamina-tech.ch

Lamina Technologies do Brasil Ltda.
Avenida Macuco, 726 Cj. 1805/1806/1807
04523-001 Moema
Sao Paulo-SP
Brazil
+55 11 2344 7890
info@lamina-tech.ch
www.lamina-tech.ch

Lamina Teknoloji Kesici Takımlar
Cihangir Mahallesi, Petrol Ofisi Caddesi
Şehit Komando Onbaşı Uğur Hancı Sokak No. 5
Avcılar, İstanbul
Turkey
t. +90 212 292 02 32
f. +90 212 292 59 51
info@laminateteknolojileri.com.tr
www.lamina-tech.ch

PT. Lamina Technologies Indonesia
Ruko The Podium Mataram - A 9 Jl. Mataram
Lippo Cikarang - Bekasi 17550
Indonesia
+62 (21) 2210 4851
info@lamina-tech.ch
www.lamina-tech.ch

TURNING CAST IRON

MAGIA PRO

LT 1115K

MAGIA PRO

LT 1115K

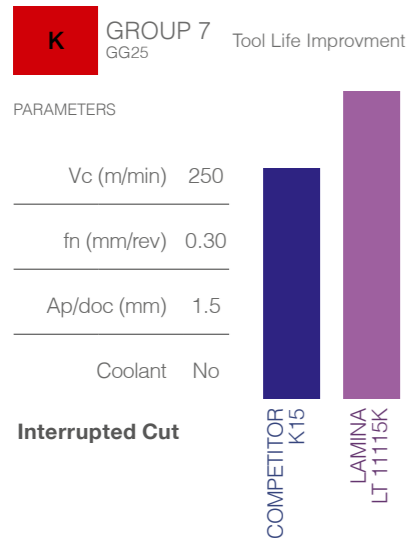
Grade K15 for continuous and light interrupted cuts. The New substrate combined with the MT CVD coating substantially improves resistance to abrasion when machining cast iron materials. Dedicated grade for Grey, Nodular and Maleable cast irons under moderate to high cutting speeds.

CAST IRON CHARACTERISTICS

- Fe-C composition with a relatively high percentage of Si (1-3%)
- Engine blocks, gears, brake discs, brake drums, crankshafts, etc.
- Short chipping material, relatively good machinability, despite being highly abrasive

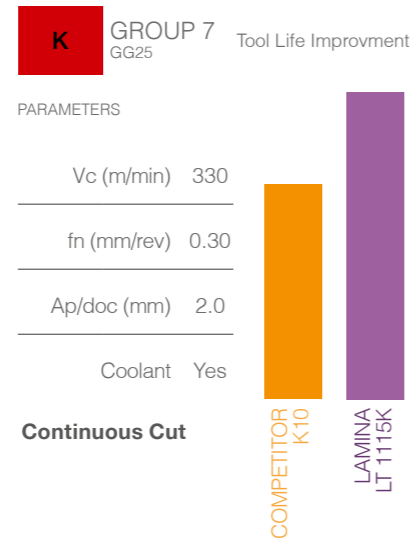
TEST RESULTS

WNMG 080408 LT1115K



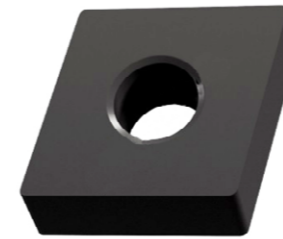
T1983

WNMG 080408 LT1115K

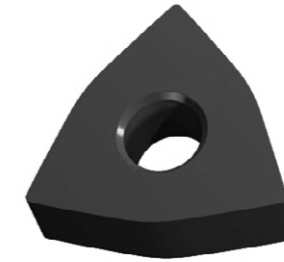


T1982

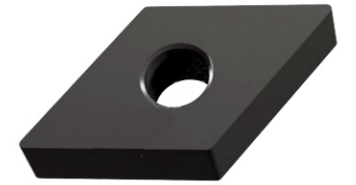
AVAILABILITY OF INSERTS



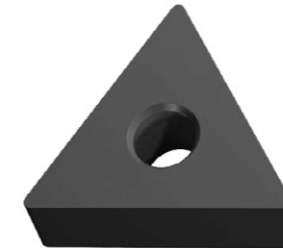
CNMA 120408
CNMA 120412



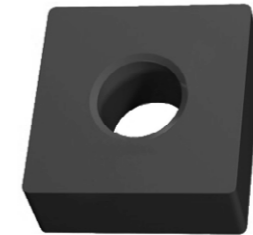
WNMA 080408
WNMA 080412



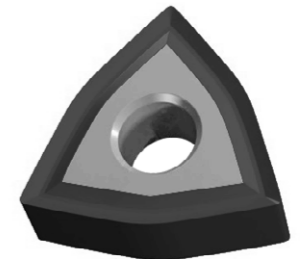
DNMA 150608
DNMA 150612



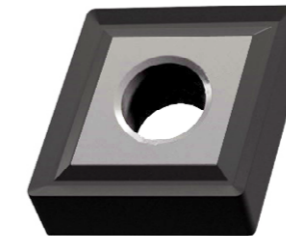
TNMA 160408
TNMA 160412



SNMA 120408
SNMA 120412



WNMG 080408
WNMG 080412



CNMG 120408
CNMG 120412

PRODUCT RANGE

| DESIGNATION | DESIGNATION ANSI | CATALOG # |
|----------------------|-------------------|-----------|
| CNMA 120408 LT 1115K | CNMA 432 LT 1115K | T0004901 |
| CNMA 120412 LT 1115K | CNMA 433 LT 1115K | T0004961 |
| CNMG 120408 LT 1115K | CNMG 432 LT 1115K | T0004992 |
| CNMG 120412 LT 1115K | CNMG 433 LT 1115K | T0004993 |
| DNMA 150608 LT 1115K | DNMA 442 LT 1115K | T0004994 |
| DNMA 150612 LT 1115K | DNMA 443 LT 1115K | T0004995 |
| SNMA 120408 LT 1115K | SNMA 432 LT 1115K | T0004996 |
| SNMA 120412 LT 1115K | SNMA 433 LT 1115K | T0004997 |
| TNMA 160408 LT 1115K | TNMA 332 LT 1115K | T0004998 |
| TNMA 160412 LT 1115K | TNMA 333 LT 1115K | T0005001 |
| WNMA 080408 LT 1115K | WNMA 432 LT 1115K | T0005002 |
| WNMA 080412 LT 1115K | WNMA 433 LT 1115K | T0005003 |
| WNMG 080408 LT 1115K | WNMG 432 LT 1115K | T0005004 |
| WNMG 080412 LT 1115K | WNMG 433 LT 1115K | T0005005 |