

HEADQUARTERS

Lamina Technologies SA Switzerland
Rue Pythagore, 2
1400 Yverdon-les-Bains
Switzerland
+41 (0)24 423 55 55
info@lamina-tech.ch
www.lamina-tech.ch

FOLLOW US

 /LaminaTechnologies

 /LaminaTechnologiesHQ

 /LaminaTech

 /LaminaTechnologies

SUBSIDIARIES

Lamina Technologies Deutschland GmbH
Athenslebener Weg 33
39418 Staßfurt
Germany
+49 (3925) 329 277
info@lamina-tech.de
www.lamina-tech.ch

Lamina Technologies (France) SA
15 Rue Bernard Palissy, Entrepot Jeantet STJ
25300 Granges Narboz
France
+33 (0)3 81 49 67 30
info@lamina-tech.fr
www.lamina-tech.ch

Lamina Technologii LLC Russia
Office 6023 - Kantemirovskaya str. 58
115477, Moscow
Russia
+7 499 653 93 56
info@lamina-russia.ru
www.lamina-tech.ch

Lamina Trading (Shanghai) Co.,Ltd
Room 340, Building No.1
No. 526 Fute 3rd Road East
Pilot Free Trade Zone
200131 Shanghai
China
+86 21 6479 0515
info-cn@lamina-tech.ch
www.lamina-tech.ch

Lamina Technologies do Brasil Ltda.
Avenida Macuco, 726 Cj. 1805/1806/1807
04523-001 Moema
Sao Paulo-SP
Brazil
+55 11 2344 7890
info@lamina-tech.ch
www.lamina-tech.ch

Lamina Teknoloji Kesici Takımlar
Cihangir Mahallesi, Petrol Ofisi Caddesi
Şehit Komando Onbaşı Uğur Hancı Sokak No. 5
Avcılar, İstanbul
Turkey
t. +90 212 292 02 32
f. +90 212 292 59 51
info@laminateknolojileri.com.tr
www.lamina-tech.ch

PT. Lamina Technologies Indonesia
Ruko The Podium Mataram - A 9 Jl.Mataram
Lippo Cikarang - Bekasi 17550
Indonesia
+62 (21) 2210 4851
info@lamina-tech.ch
www.lamina-tech.ch

P4100161

TURNING STAINLESS STEELS

MAGIA PRO

LT 1125M

LT 1115M

MAGIA PRO

LT 1125M

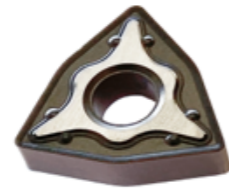
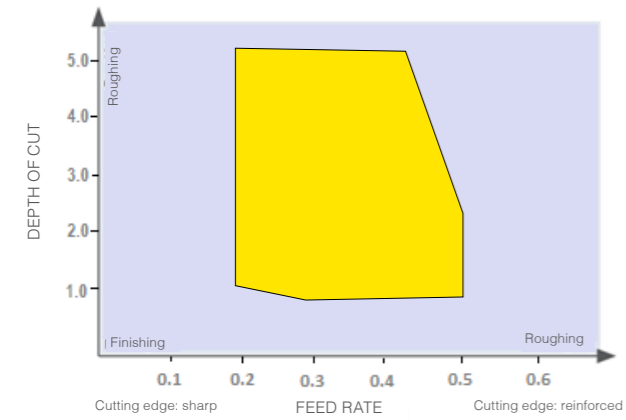
Dedicated grade for interrupted cuts on stainless steel. 1st choice for low to medium cutting speeds under unstable conditions. A new substrate combined with the latest CVD MT Al₂O₃ coating greatly improves consistency of tool life, avoiding premature peeling of the coating and chipping of the cutting edge.

LT 1115M

Dedicated grade for general stainless steel turning. 1st choice for medium to high cutting speeds under stable conditions. With the new CVD MT-Al₂O₃ coating and adhesion resistance due to the Post-coating treatment, it realizes stable, long tool life and high resistance to Notch wear.

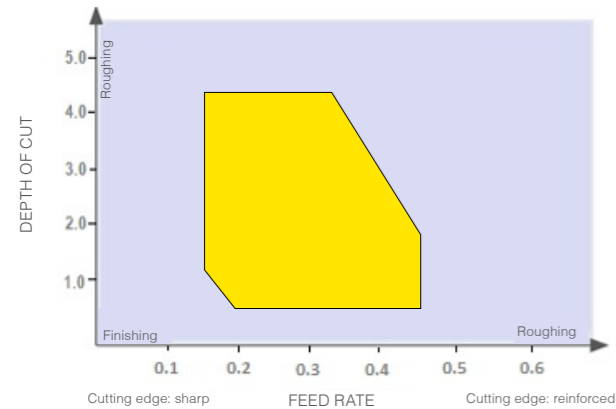
CHIPBREAKERS APPLICATION RANGE

RM - CHIPBREAKER



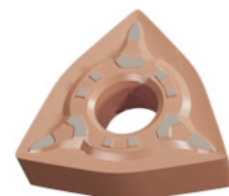
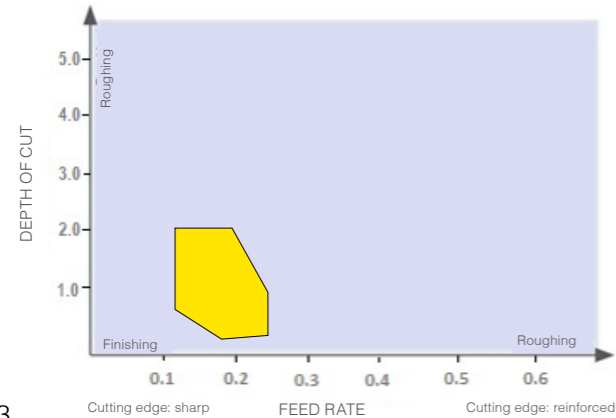
RM - Reinforced cutting edge for heavy continuous and interrupted cuts. Even when using low cutting speeds, the positive rake angle avoids build up edge. Good combination with the grade LT1125M for unstable conditions.

MM - CHIPBREAKER



MM - Positive cutting edge and very precisely positioned deflectors enhance chip control and reduce depth of cut notching. First choice combined with the grade LT1115M for semi-finishing operations under stable conditions using moderate to high cutting speeds.

FM - CHIPBREAKER

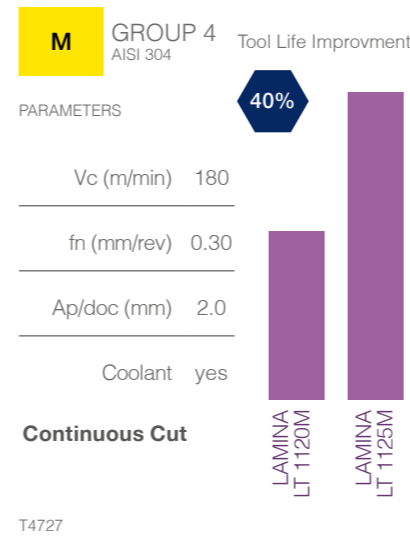


FM - Highly positive cutting edge, specifically for small depths of cut (0.4mm). The positive rake angle gives a smooth cut and improves surface finish. Combined with LT1115M, it is the first choice for finishing operations using high cutting speeds.

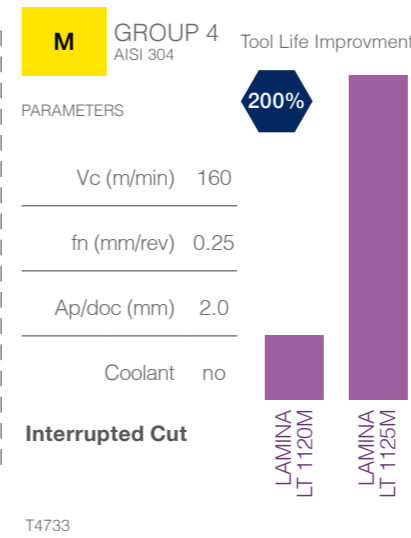
	AVAILABILITY		INTERRUPTED CUT		CONTINUOUS CUT	
	LT 1115M	LT 1125M	LT 1115M	LT 1125M	LT 1115M	LT 1125M
FM	YES	NO	NO	NO	YES	NO
MM	YES	NO	NO	NO	YES	NO
RM	YES	YES	NO	YES	YES	YES

TEST RESULTS

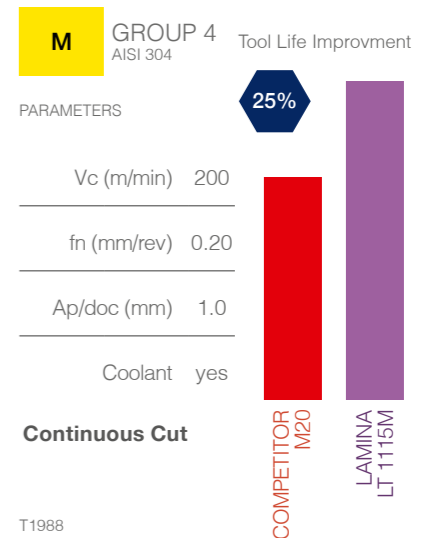
WNMG 080408 RM LT1125M



WNMG 080408 RM LT1125M



TNMG 160408 MM LT1115M



LT 1115M

DESIGNATION	DESIGNATION ANSI	CATALOG #
WNMG 080408 MM	WNMG 432 MM	T0004923
CNMG 120408 MM	CNMG 432 MM	T0004924
WNMG 060408 MM	WNMG 332 MM	T0004925
DNMG 150608 MM	DNMG 442 MM	T0004926
DNMG 150408 MM	DNMG 432 MM	T0004927
VNMG 160408 MM	VNMG 332 MM	T0004928
DNMG 110408 MM	DNMG 332 MM	T0004929
SNMG 120408 MM	SNMG 432 MM	T0004900
TNMG 160408 MM	TNMG 432 MM	T0004922
CNMG 120408 RM	CNMG 432 RM	T0004902
DNMG 150608 RM	DNMG 442 RM	T0004903
TNMG 160408 RM	TNMG 332 RM	T0004904
WNMG 080408 RM	WNMG 432 RM	T0004905
CNMG 120404 FM	CNMG 431 FM	T0004906
DNMG 110404 FM	DNMG 331 FM	T0004907
TNMG 160404 FM	TNMG 331 FM	T0004908
VNMG 160404 FM	VNMG 331 FM	T0004909
WNMG 060404 FM	WNMG 331 FM	T0004910
WNMG 080404 FM	WNMG 431 FM	T0004911

LT 1125M

DESIGNATION	DESIGNATION ANSI	CATALOG #
WNMG 080408 RM	WNMG 432 RM	T0004912
CNMG 120408 RM	CNMG 432 RM	T0004913
WNMG 060408 RM	WNMG 332 RM	T0004914
DNMG 150608 RM	DNMG 442 RM	T0004915
DNMG 150612 RM	DNMG 443 RM	T0004916
WNMG 080412 RM	WNMG 433 RM	T0004917
VNMG 160408 RM	VNMG 332 RM	T0004918
CNMG 120412 RM	CNMG 433 RM	T0004919
CNMG 160612 RM	CNMG 553 RM	T0004958
DNMG 110408 RM	DNMG 332 RM	T0004959
SNMG 120408 RM	SNMG 432 RM	T0004960
TNMG 160408 RM	TNMG 332 RM	T0004962